



# FlowDirector-6400-F

**64 QSFP+/QSFP28 40G/100G Ports  
Programmable Network Flow Director**

## Applications

- Network Monitoring and Forensic Infrastructure ■
- Network Visibility and SPAN Port Expansion ■
- Advanced Inline High Speed Network Diagnosis ■
- Lab Test Equipment Sharing and Automation ■
- Lab Equipment Cable Management Optimization ■
- Network Element Quality Assurance ■

### **64 40G/100G QSFP+/QSFP28**

40G/100G QSFP+/QSFP28 Ports With DAC Support

Each 40G/100G Can Be Broken into 4x 10G/25G Ports

12.8Tbps Throughput, Low Latency

### **Powerful Flow Management**

Supports Dynamic Virtual Wire; Inline Traffic Split and Merge; Traffic Replication; Traffic Aggregation; Fan out; Load Balancing and Switching all at line rate.

### **Green and Cost Effective**

2U Rack Mount

900W of Power Consumption

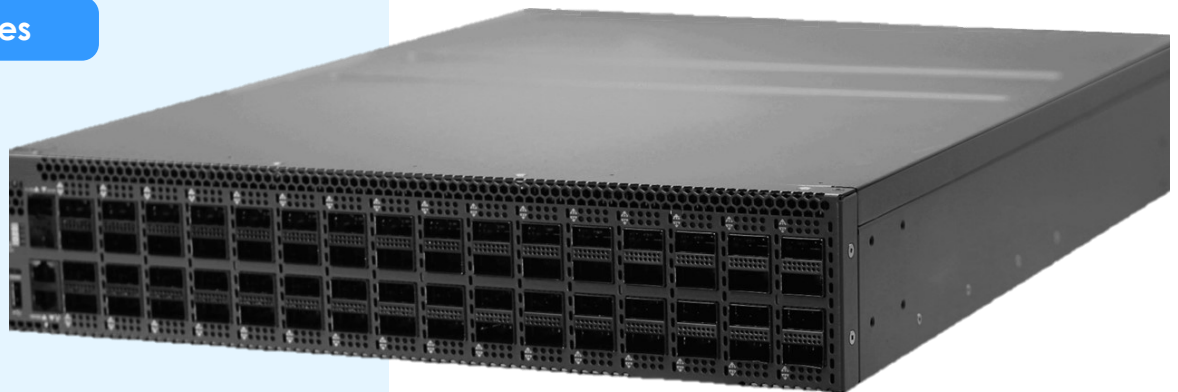
### **Easy to use Web GUI, CLI and Automation APIs**



Next Generation Device Designed For Network Visibility and Forensic Infrastructure. Significantly Reduce SPAN Port Usage and Maintain Total Visibility for All Analytic Equipment. Improve Lab Tool Efficiency and Simplify Cable Management

# FlowDirector-6400-F

InfiniFlow Series



- Network Monitoring and Forensic Infrastructure
- Maintain total visibility for all network monitoring and forensic devices
- Flexible traffic management modes, reliable and lossless for Ten Gigabit, Forty Gigabit, Twenty Five Gigabit and One Hundred Gigabit
- Standard based Easy to Use InfiniOS
- Web Based UI and CLI Support
- Programmable API to automate operating tasks
- Comprehensive Status and Statistics Indication through User Interface
- Improves Sharing of Lab Equipment
- Improves Lab Cable Management and inline diagnosis capabilities
- Low TCO
- Green

## Contact us

Infinicore Inc.  
<http://www.infinicoreinc.com>

Sales:  
[sales@infinicoreinc.com](mailto:sales@infinicoreinc.com)  
Support:  
[support@infinicoreinc.com](mailto:support@infinicoreinc.com)

## Next Generation Device For Total Network Visibility

The Infinicore™ Network FlowDirector-6400-F helps network administrator to connect their high speed network to different monitoring and forensic devices without creating congestions. The FlowDirector-6400-F gives flexibilities to network administrators to deploy extra monitoring device on the fly without the needs for SPAN ports. Network administrators can chose many different traffic modes range from replication to load balancing to best suites their needs. For all functioning modes, The FlowDirector-6400-F provides up to 12.8Tbps throughput at line rate even for the smallest frame size.

## Streamlined, Outstanding Software Package

The Network FlowDirector-6400-F is powered by Intel's P4 programmable Tofino™ switch ASIC and InfiniOS with comprehensive remote management through Web Based GUI and Command Line Interface. Operator can access all the functionalities and monitor device status through Web based GUI.

## Improve Lab Efficiency and Ease of Cable Management

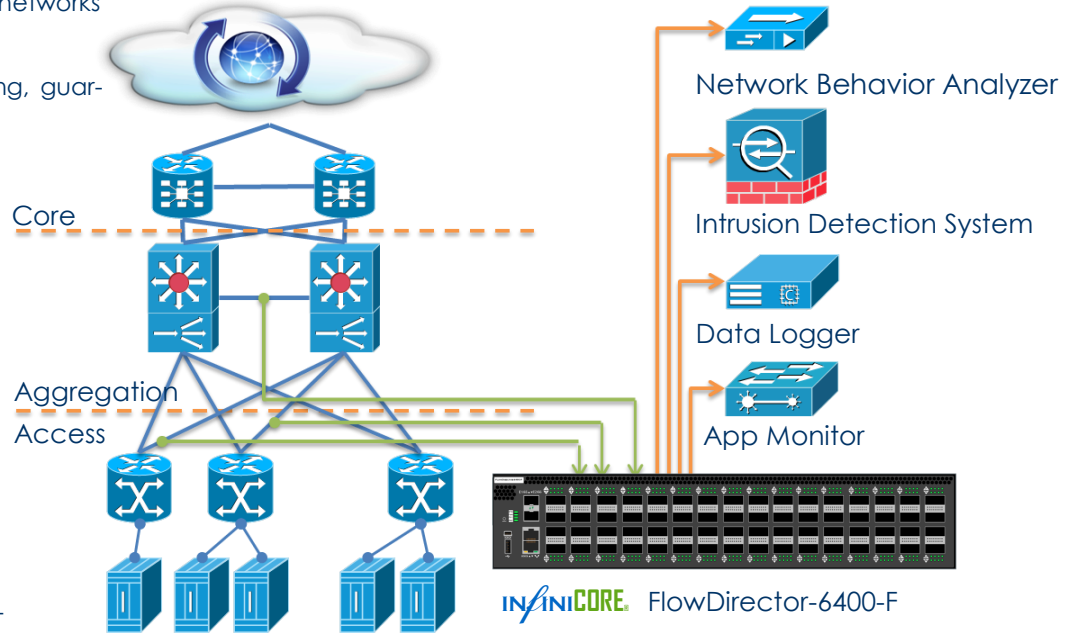
The Network FlowDirector-6400-F is a critical tool to help you to improve LAB efficiency and ease of cable management. You can share expensive, scarce load generation ports across different DUT models and teams without rewiring the cable. Using our innovative Virtual Wire technology, you can change the connectivity by simple mouse clicks. Additionally the FlowDirector-6400-F provides detailed statistics and plot capability so that you have complete visibility into your lab setup.

Port	Speed	Mode	Link	FlowDirector	Quality	Health	Settings	Settings	Link	Health	Mode	Link	Health	Mode
P1	P1	1000	NONE	ENB	DOWN	0	0	0	0	0	0	0%	0%	
P2	P2	1000	NONE	ENB	DOWN	0	0	0	0	0	0	0%	0%	
P3	P3	1000	NONE	ENB	DOWN	0	0	0	0	0	0	0%	0%	
P4	P4	1000	NONE	ENB	DOWN	0	0	0	0	0	0	0%	0%	
P5	P5	1000	NONE	ENB	DOWN	0	0	0	0	0	0	0%	0%	
P6	P6	1000	NONE	ENB	DOWN	0	0	0	0	0	0	0%	0%	
P7	P7	1000	NONE	ENB	DOWN	0	0	0	0	0	0	0%	0%	
P8	P8	1000	NONE	ENB	DOWN	0	0	0	0	0	0	0%	0%	

# Highlights of Product Use Cases

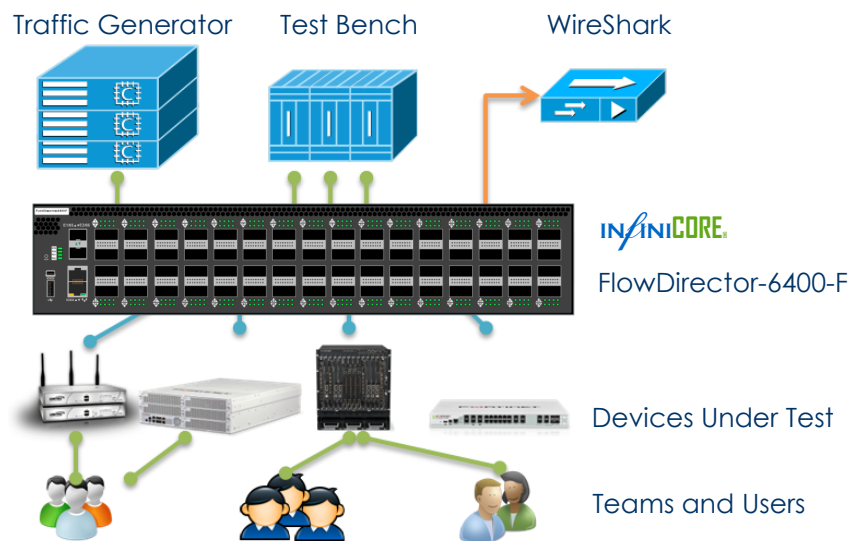
## Next Generation Device for Network Monitoring and Forensic Infrastructure

- Single Or Multiple Points Deployment, minimum impact to networks
- Line rate packet forwarding, guaranteed performance
- Connect unlimited Monitoring devices on the fly without service interruption
- Advanced built-in traffic management modes to meet your needs
- Help network meet regulatory compliance such as SOX, PCI and HIPPA
- Wide range of media support, 100G, 40G, 25G, 10G



## Improve Sharing of Scarce Lab Resource and Simplify Cable Management

- Sharing Expensive Tester Ports across multiple teams and DUTs
- Automatically switch connections between tester and DUTs
- Non-intrusive sniffer solution. Taps can be created in real time and on demand
- Run regression test across different DUTs without cable switching
- User management and port reservation
- Comprehensive Statistics and Counters, Total visibility to network state and traffic

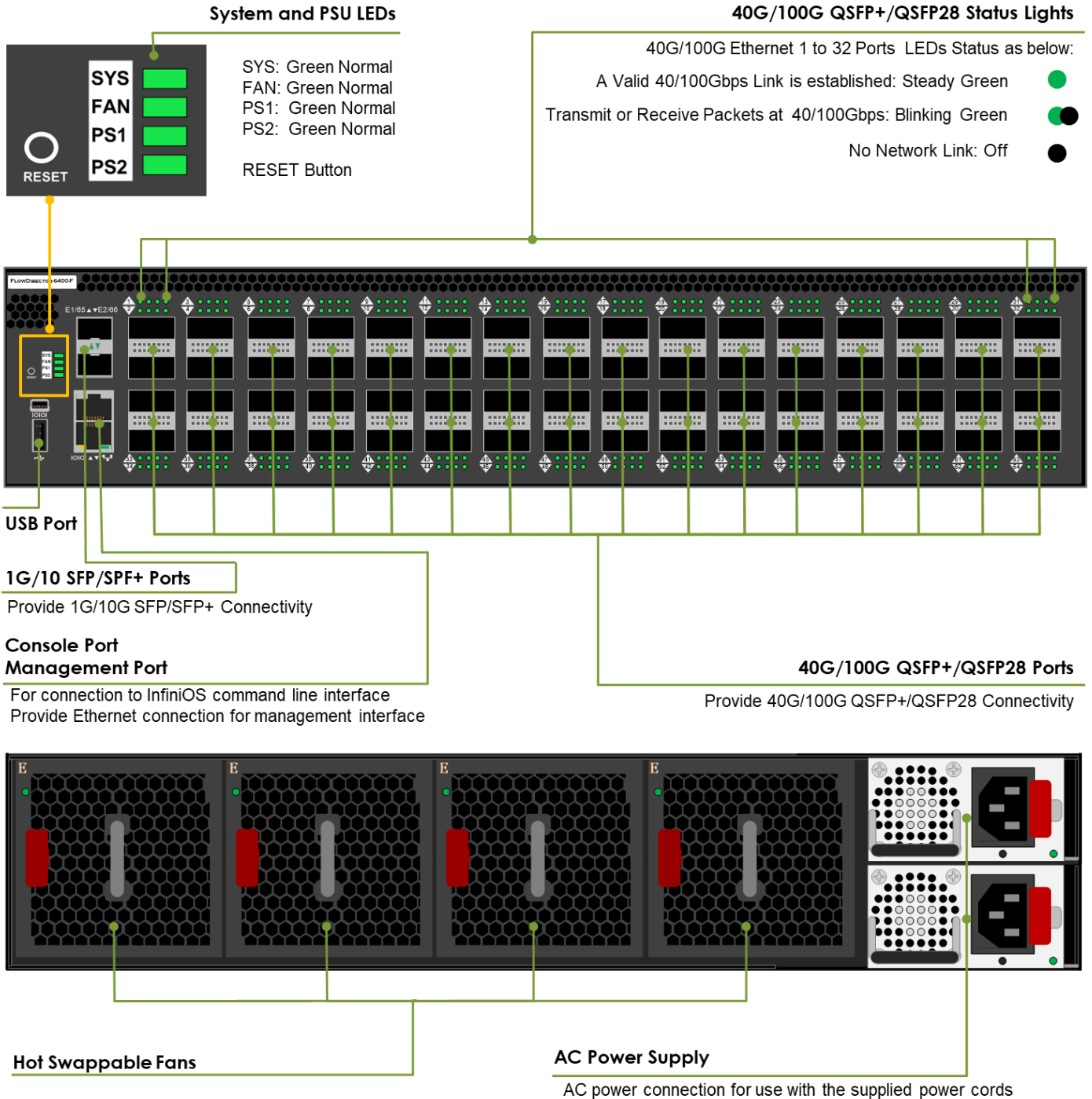


- Efficiently Share Lab Equipment and DUTs
- No Cable Rewiring
- Non intrusive traffic monitoring

All specifications and figures are subject to change without prior notice.  
 Actual products may look different from the photos.  
 All trademarks and logos are the properties of InfiniCore Inc. All rights reserved.

# Innovation Towards Total Visibility Into Your Network

- **Data centers** and **enterprises** that deploy IDS, Probes, data logger devices
- **Governments** and **agencies** network monitoring, forensic collection
- **Service providers** delivering services and applications over IP networks
- **Operators** maintaining networks and standard compliance
- **Third parties** and **labs** performing devices validation and certification



## Infinicore™ FlowDirector-6400-F Order Information

Part Number	Redundant Power Supply	Form Factor	Operating Temperature
FDS-6400-F-R2	Dual Modules	2U Rack Mountable	0-40 C

Contact Infinicore Sales [sales@infinicoreinc.com](mailto:sales@infinicoreinc.com)  
 For more information, visit <http://www.infinicoreinc.com>